



SERIE **025S.08**

PNEUMATIC COUPLINGS
PNEUMATISCHE KUPPLUNGEN



SAFETY SELF VENTING TYPE **SICHERHEITSVERRIEGELUNG**

Interchangeability - Kompatibilität
TST 026, RECTUS 25, RECTUS 26, CEJN 320,
PARKER PEF, JWL 520, JWL 530, Legris

Temperature Range - Temperaturbereich
-20°C +100°C (-4°F +212°F)

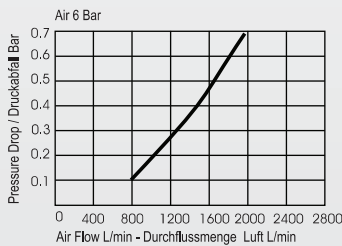
Working Pressure - Betriebsdruck
0 - 12 bar (0 - 508 PSI)

Flow capacity - Nennweite
NW - 7.4

For optional orders please add the symbol
of your option end of the order no.
Bei Bestellungen Kennbuchstabe
bitte hinzufügen.

Material -Material

- Inner Part - Innenteil : Aluminium - Eloxal -
Aluminium - Eloxal
- Back Part - Verschluss : Brass Nickel Plated -
Messing Vernickelt
- Valve - Ventil : Steel Chrome Plated
Stahl Verchromt
- Spring - Feder : Stainless Steel -
Edelstahl
- Coupler Body - Gehäuse : Steel Chrome Plated
Stahl Verchromt
- Seals - Dichtungen : Nitrile (Ni) - NBR
- Balls - Kugeln : AISI 420 Hardened
Edelstahl AISI 420
- Push Button -
Druckknopf : AISI 420 Hardened Steel
Chrome Plated -
Edelstahl AISI 420
Verchromt



Couplers and Plugs
Kupplungen und Nippel

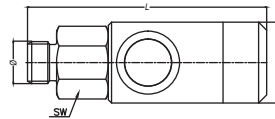
Connection
Anschlüsse

Order No
Bestellnr.

SW

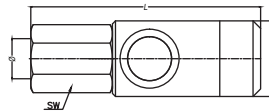
L

ØD



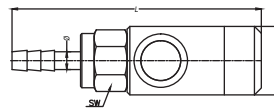
Male Thread Coupling
Kupplung mit Aussengewinde

BSP 1/4"	025.S08 EG 13	20	69.3	26
BSP 3/8"	025.S08 EG 17	20	68.3	26
BSP 1/2"	025.S08 EG 21	25	70.3	26



Female Thread Coupling
Kupplung mit Innengewinde

BSP 1/4"	025.S08 DG 13	20	69.6	26
BSP 3/8"	025.S08 DG 17	20	72.3	26
BSP 1/2"	025.S08 DG 21	24	74.3	26



Standard hose Barb Coupling
Kupplung mit Schlauchtülle

Ø 6 - 1/4"	025.S08 HG 06	20	83.6	26
Ø 8 - 5/16"	025.S08 HG 08	20	83.6	26
Ø 10 - 3/8"	025.S08 HG 10	20	83.6	26