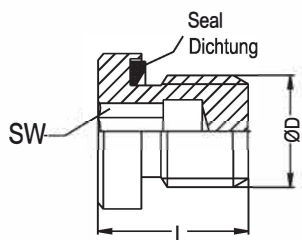


KTC Pressure Plug With Seal KTC Verschlussstopfen mit Dichtung

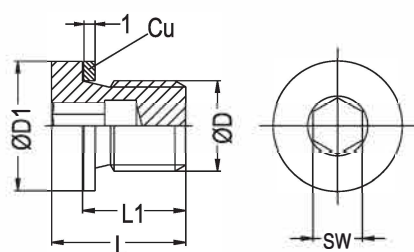
Material : Steel Zinc Plated / Stahl verzinkt
 Seal - Dichtung :Buna (M)



Order No Bestellnr.	ØD	L	SW	Bar Max. Working Pressure Max. Betriebsdruck
KTC 10	BSP 1/8"	12	5	630
KTC 13	BSP 1/4"	17	6	630
KTC 17	BSP 3/8"	17	8	630
KTC 21	BSP 1/2"	19	10	630
KTC 26	BSP 3/4"	21	12	400
KTC 33	BSP 1"	22.5	17	400
KTC 42	BSP 1.1/4"	22.5	22	400
KTC 48	BSP 1.1/2"	22.5	24	315

KFR Pressure Plug KFR Verschlussstopfen

Material : Brass - Messing



Order No Bestellnr.	ØD	ØD1	L	L1	SW
KFR 10	G 1/8"	14	11	8	5
KFR 13	G 1/4"	18	15	12	6
KFR 17	G 3/8"	22	15	12	8
KFR 21	G 1/2"	26	18	14	10
KFR 26	G 3/4"	32	20	15	12
KFR 33	G 1"	39	21	16	17
KFM 10	M 10x1	14	11	8	5
KFM 12	M 12x1.5	17	15	12	6
KFM 14	M 14x1.5	19	15	12	6
KFM 16	M 16x1.5	21	15	12	8
KFM 22	M 22x1.5	27	18	14	10
KFM 24	M 24x1.5	30	18	14	12