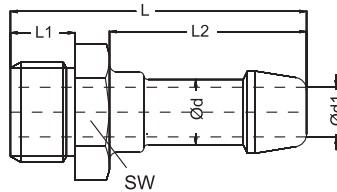


Male threaded hose tail
Schlauchtülle mit Außengewinde (1 Ansatz)

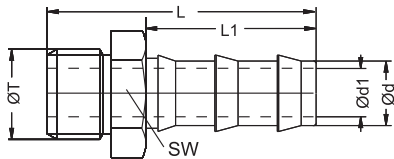
Material: Brass Nickel Plated / Messing vernickelt



Order No Bestellnr.	Thread Gewinde ØF	Hose Inner Schlauchbñner Ød	d1	L	L1	L2	SW
TAF 10.04	1/8"	4	3	43	8	28	14
TAF 10.06	1/8"	6	4	43	8	28	14
TAF 10.08	1/8"	8	5.5	43	8	28	14
TAF 10.10	1/8"	10	5.5	43	8	28	14
TAF 13.06	1/4"	6	4	45	11	28	17
TAF 13.08	1/4"	8	5.5	45	11	28	17
TAF 13.09	1/4"	9	6	45	11	28	17
TAF 13.10	1/4"	10	7	45	11	28	17
TAF 13.13	1/4"	13	8	51	11	33	17
TAF 17.08	3/8"	8	5.5	45	11	28	19
TAF 17.10	3/8"	10	7	45	11	28	19
TAF 17.13	3/8"	13	9	52	11	33	19
TAF 17.16	3/8"	16	11	52	11	33	22
TAF 21.13	1/2"	13	9	54	14	33	22
TAF 21.16	1/2"	16	11	54	14	33	22
TAF 26.16	3/4"	16	11	58	16	33	30

Male threaded push lock hose tail
Schlauchtülle mit Außengewinde (1 Ansatz)

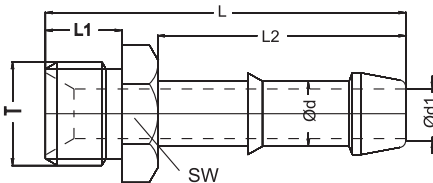
Material : Brass Nickel Plated / Messing Vernickelt



Order No / Bestellnr.	F - Ød Connection / Anschlüsse	ØT	Ød1	L	SW
EHF 13-08	G1/4" - Ø 8	1/4"	5.5	41	17
EHF 13-10	G1/4" - Ø 10	1/4"	7.5	41	17
EHF 13-13	G1/4" - Ø 12.7	1/4"	9	45	17
EHF 17-13	G3/8" - Ø 12.7	3/8"	10	45	19
EHF 17-16	G3/8" - Ø 16	3/8"	12	58	19
EHF 21-13	G1/2" - Ø 12.7	1/2"	10	49	22
EHF 21-16	G1/2" - Ø 16	1/2"	13	60	22
EHF 26-16	G3/4" - Ø 16	3/4"	13	63	30

Push Lock Hose Nipple
Nippel für schnellstech Schlauch

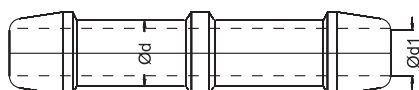
Male threaded hose tail
Schlauchtülle mit Außengewinde (1 Ansatz)
Material : Steel + Cr3 / Chrome plated steel
Stahl verzinkt



Order No Bestellnr.	Thread Gewinde ØF	Hose Inner Schlauchbñner Ød	d1	L	L1	L2	SW
EHL 17.13	3/8"		9	72	12	53	19
EHL 17.16	3/8"	13	11	72	12	53	22
EHL 21.13	1/2"	16	9	74	14	53	22
EHL 21.16	1/2"	13	11	74	14	53	22
EHL 21.19	1/2"	16	11	74	14	53	22
EHL 26.19	3/4"	19	15	78	16	53	30
EHL 26.25	3/4"	19	19	80	16	53	35
EHL 33.19	1"	25	15	84	20	53	36
EHL 33.25	1"	19	19	84	20	53	36
		25					

Hose connection tail / Schlauchverbindungstuelle

Material : Brass Nickel Plated / Messing vernickelt



Order No / Bestellnr.	Ød Hose Inner Innendurchmesser	d1	L
UHU 04	4	3	52
UHU 06	6	4	52
UHU 08	8	6	52
UHU 09	9	7	52
UHU 10	10	8	52
UHU 13	13	10	64
UHU 16	16	12	64
UHU 19	19	15	64
UHU 23	23	19	64