

**PNEUMATIC COUPLINGS**  
PNEUMATISCHE KUPPLUNGEN

**SERIE 022**

SUPER FLOW **SUPERDURCHFLUSS**



**Couplers and Plugs**  
Kupplungen und Nippel

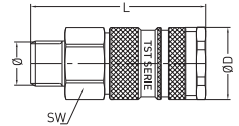
Connection  
Anschlüsse

Order No  
Bestellnr.

SW

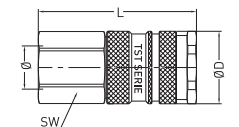
L

ØD



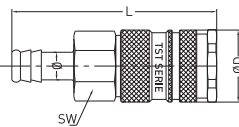
Male Thread Coupling  
Kupplung mit Aussengewinde

BSPT 1/4"	022 RG 13	19	61,8	23
BSPT 3/8"	022 RG 17	19	62,8	23
BSPT 1/2"	022 RG 21	22	56,8	23



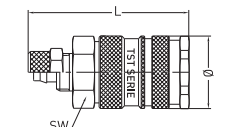
Female Thread Coupling  
Kupplung mit Innengewinde

BSP 1/4"	022 DG 13	19	56,8	23
BSP 3/8"	022 DG 17	19	56,8	23
BSP 1/2"	022 DG 21	24	58,8	23



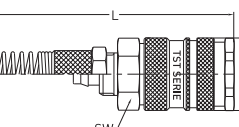
Standard Hose Barb Coupling  
Kupplung mit Schlauchtülle

6 mm - 1/4"	022 HG 06	19	72,8	23
8 mm - 5/16"	022 HG 08	19	72,8	23
9 mm - 5/14"	022 HG 09	19	72,8	23
10 mm - 3/8"	022 HG 10	19	72,8	23
13 mm - 1/2"	022 HG 13	19	72,8	23



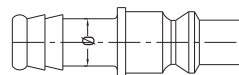
Plastic Hose Coupling  
Kupplung für Kunststoffschlauch

6 x 8 mm M12x1	022 PG 06	19	63,8	23
8 x 10 mm M16x1	022 PG 08	19	66,8	23
9 x 12 mm M16x1	022 PG 09	19	66,8	23



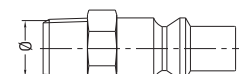
Plastic Hose Coupling With Spring  
Kupplung für Kunststoffschlauch mit Knickschutzfeder

6 x 8 mm M12x1	022 YG 06	19	144,3	23
8 x 10 mm M16x1	022 YG 08	19	161,3	23
9 x 12 mm M16x1	022 YG 09	19	161,3	23



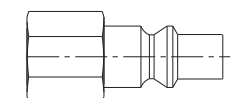
Standard Hose Barb Plug  
Nippel mit Schlauchtülle

6 mm - 1/4"	022 HU 06		48	12
8 mm - 5/16"	022 HU 08		48	12
10 mm - 3/8"	022 HU 10		48	12
13 mm - 1/2"	022 HU 13		48	15



Male Thread Plug  
Nippel mit Aussengewinde

BSPT 1/8"	022 RU 10	12	40	
BSPT 1/4"	022 RU 13	14	43	
BSPT 3/8"	022 RU 17	17	43	
BSPT 1/2"	022 RU 21	22	48	



Female Thread Plug  
Nippel mit Innengewinde

BSP 1/8"	022 DU 10	14	34	
BSP 1/4"	022 DU 13	17	37	
BSP 3/8"	022 DU 17	19	37	
BSP 1/2"	022 DU 21	24	48	

**Interchangeability - Kompatibilität**  
TST 014, RECTUS 14, ARO 210, PARKER 50  
CEJN 300, ORION 44510, RECTUS 22,  
AFNOR:NF.49.053, ISO 6150, JWL522, JWL532

**Temperature Range - Temperaturbereich**  
-20°C +100°C (-4°F +212°F)

**Working Pressure - Betriebsdruck**  
0 - 35 bar (0 - 508 PSI)

**Flow capacity - Nennweite**  
NW - 5.5

**Option - Optionen**  
F - Straight through flow -  
ungehinderter Durchfluss  
K - Chrome plated - verchromt  
V - Viton Seal - Viton Dichtung

For optional orders please add the symbol of your  
option end of the order no.  
Bei Optionsbestellungen Kennbuchstabe  
bitte hinzufügen (Beispiel: 022 EG 13-K-V)

- Material - Material**
- Coupler Body - Kupplungsgrundkörper : Steel Nickel Plated - Stahl vernickelt
  - Back Part - Rückwärtiger : Brass Nickel Plated - Messing vernickelt
  - Sleeve - Hülse : Steel Nickel Plated - Stahl vernickelt
  - Valve - Ventil : Brass - Messing
  - Springs - Federn : Stainless Steel - Edelstahl
  - Locking O-Ring - Sprenging : Stainless Steel - Edelstahl
  - Balls - Kugeln : Stainless Steel - Edelstahl AISI 420
  - Seals - Dichtungen : Nitrile (Ni) - NBR (Ni)
  - Plug - Nippel : Steel Nickel Plated - Stahl vernickelt

