

COUPLINGS, MULTICOUPLINGS & MOULD COOLING PRODUCTS

KUPPLUNGEN, MULTIKUPPLUNGEN & KÜHLUNGSELEMENTE FÜR WERKZEUGE

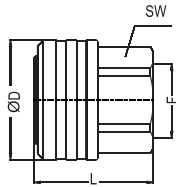
SERIE 106

Standard & F Serie



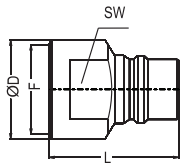
**Coupler and Plug
Kupplung und Nippel**

Body Size Nennweite	Connection Anschlüsse (F/Ø)	Order No Bestellnr.	C	D	SW	L	LI	L2
------------------------	-----------------------------------	------------------------	---	---	----	---	----	----



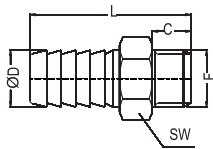
Socket female threaded
Kupplung mit Innengewinde

25	BSP 1"	106.25 DGF 33	57	46	57			
33	BSP 1.1/4"	106.33 DGF 42	64	55	62			
50	BSP 2"	106.50 DGF 60	89	77	70			



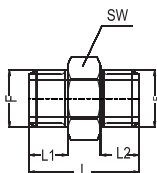
Female threaded plug
Nippel mit Innengewinde

25	BSP 1"	106.25 DU 33	44.6	41	61			
33	BSP 1.1/4"	106.33 DU 42	54.6	50	66			
50	BSP 2"	106.50 DU 60	74.6	71	78			



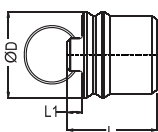
Male threaded hose tail
(chromed brass)
Schlauchtülle mit Aussengewinde

25	BSP 1"	100.25 TAF 25	21	28	40	69		
25	BSP 1"	106.25 TAF 33	21	35	40	70		
33	BSP 1.1/4"	100.33 TAF 32	21	35	50	69		
33	BSP 1.1/4"	106.33 TAF 42	21	41	50	69		
50	BSP 2"	100.50 TAF 51	25	54	70	85		
50	BSP 2"	106.50 TAF 60	25	61	70	85		



Male/male adaptor
(chromed brass)
Doppelnippel mit Aussengewinde

25	BSP 1"	106.25 EE 33-33	41	46	19	19		
33	BSP 1.1/4"	106.33 EE 42-42	50	52	21	21		
50	BSP 2"	106.50 EE 60-60	70	65	25	25		



Protective dust cap for socket
Schutzkappe

25		106.25 KG 33	35		26.2	3.2		
33		106.33 KG 42	44		27.2	3.2		
50		106.50 KG 60	64		27.2	3.2		

Temperature Range - Temperaturbereich
-20°C +100°C (-4°F +250°F)

Working Pressure - Betriebsdruck
0-10 bar (0-145 PSI)

Flow capacity - Nennweiten
NW - 106.25
NW - 106.33
Nw - 106.50

Standard version - Standardversion
Full Flow - Feier Durchfluss nicht absperbar
Chrome plated - Verchromt
Ni-Nitrile NBR

Options - Optionen
E - EPDM (Ethylene-propylene)
V - Fluorocarbene Seal - Fluorocarbene Dichtung

For optional orders please add the symbol of your option end of the order no.
Bei Bestellungen Kennbuchstabe bitte hinzufügen (Beispiel: 106.25 DGF 33-E-V)

Material - Material
Coupler body - Kupplungsgrundkörper :Brass Chrome Plated - Messing Verchromet
Back Part - Hinterteil :Brass Nickel Plated - Messing Vernickelt
Sleeve - Hülse :BrassChrome Plated - Messing Verchromet
Stainless Steel - Edelstahl
Springs - Federn :Stainless Steel - Edelstahl
Locking O-Ring-Sprengling :Stainless Steel - Edelstahl
Balls -Kugeln :Stainless Steel - Edelstahl
Seals - Dichtungen :NBR - Nitrile
Plug - Nippel :AISI - 420 (hardened-Gehärtet)

