



SERIE 120

COUPLINGS, MULTICOUPLINGS & MOULD COOLING PRODUCTS

KUPPLUNGEN, MULTIKUPPLUNGEN & KÜHLUNGSELEMENTE FÜR WERKZEUGE



**Interchangeability - Kompatibilität zu anderen**  
ABA 3/4", RECTUS 42

**Temperature Range - Temperaturbereich**  
-20°C +100°C (-4°F +212°F)

**Working Pressure - Betriebsdruck**  
0 - 15 bar (0 - 230 PSI)

**Flow capacity - Nennweite**  
NW - 11

**Standard version - Standardversion**  
Brass - Messing  
Nitrile (Ni) - NBR (Ni)  
Without plating - ohne Beschichtung

**Options - Optionen**  
K - Chrome plated - Verchromt  
N - Nickel plated - Vernickelt  
V - Viton Seal - Viton Dichtung

**For optional orders please add the symbol of your option end of the order no.**  
Bei Bestellungen  
Kennbuchstabe bitte hinzufügen  
(Beispiel: 120 DG 26-K-V)

**Material - Material**

- Coupler Body - Kupplungsgrundkörper : Brass - Messing
- Sleeve - Hülse : Brass - Messing
- Valve - Ventil : Brass - Messing
- Springs - Federn : Stainless Steel - Edelstahl
- Locking O-Ring - Sprengring : Stainless Steel - Edelstahl
- Balls - Kugeln : Stainless Steel - Edelstahl
- Seals - Dichtungen : Nitrile - NBR
- Plug - Nippel : Brass - Messing

**Using Area:**

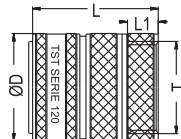
- In all kinds of plumbing
- On laundry and private house holds machines
- On garden hoses connections
- On cooling system of plastic zamak, brass and aluminium injection molds
- On cleaning and washing
- On high pressure scrubbers
- On all outdoor (garage, workshop) water connections
- All industries

**Anwendungen:**

- an allen Arten von Rohrleitungen
- in Wäscherein und Waschmaschinen
- an Gartenschlauchanschlüssen
- bei Kühlsystemen mit Kunststoff, Zamak, Messing und Aluminiumkokillenformen
- bei Reinigungs - und Waschsyste men von Maschinen
- bei Hochdruckreinigern
- bei allen äußeren Wasseranschlüssen (Garage Werkstatt)
- alle Industriezweige

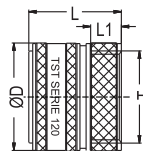
**Coupler and Plug**  
Kupplung und Nippel

| Connection<br>Anschlüsse<br>T | Order No / Bestellnr. |    | ØD | L | L1 | SW |
|-------------------------------|-----------------------|----|----|---|----|----|
|                               | ←→                    | →← |    |   |    |    |



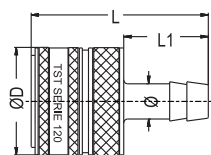
Female Threaded Coupler With valve  
Kupplung Ventil Innengewinde

|          |           |  |    |      |    |  |
|----------|-----------|--|----|------|----|--|
| BSP 3/4" | 120 DG 26 |  | 30 | 56.5 | 30 |  |
|----------|-----------|--|----|------|----|--|



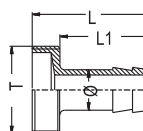
Coupler Without valve  
Kupplung ohne Ventil

|          |           |  |    |    |     |  |
|----------|-----------|--|----|----|-----|--|
| BSP 3/4" | 120 BG 26 |  | 30 | 32 | 8.5 |  |
|----------|-----------|--|----|----|-----|--|



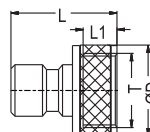
Hose Tail Coupler Without valve  
Schlauchtülle  
Kupplung ohne Ventil

|       |            |  |    |      |      |  |
|-------|------------|--|----|------|------|--|
| 8 mm  | 120 HGF 08 |  | 30 | 55.3 | 23.3 |  |
| 9 mm  | 120 HGF 09 |  | 30 | 55.3 | 23.3 |  |
| 10 mm | 120 HGF 10 |  | 30 | 55.3 | 23.3 |  |
| 13mm  | 120 HGF 13 |  | 30 | 55.3 | 23.3 |  |
| 16 mm | 120 HGF 16 |  | 30 | 55.3 | 23.3 |  |
| 19 mm | 120 HGF 19 |  | 30 | 55.3 | 23.3 |  |



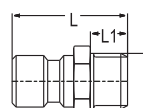
Male Threaded Hose Tail  
Schlauchtülle Nippel  
mit Aussengewinde

|       |           |       |      |      |  |  |
|-------|-----------|-------|------|------|--|--|
| 8 mm  | 120 GU 08 | G3/4" | 30.8 | 23.3 |  |  |
| 9 mm  | 120 GU 09 | G3/4" | 30.8 | 23.3 |  |  |
| 10 mm | 120 GU 10 | G3/4" | 30.8 | 23.3 |  |  |
| 13 mm | 120 GU 13 | G3/4" | 30.8 | 23.3 |  |  |
| 16 mm | 120 GU 16 | G3/4" | 30.8 | 23.3 |  |  |
| 19 mm | 120 GU 19 | G3/4" | 30.8 | 23.3 |  |  |



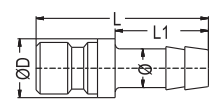
Female Threaded Nipples  
Nippel mit Innengewinde

|          |            |  |    |    |     |  |
|----------|------------|--|----|----|-----|--|
| BSP 1/4" | 120 DU 13  |  | 19 | 32 | 10  |  |
| BSP 3/8" | 120 DU 17  |  | 19 | 32 | 10  |  |
| BSP 1/2" | 120 DU 21  |  | 24 | 34 | 12  |  |
| M22x1    | 120 DUM 22 |  | 25 | 18 | 9.5 |  |
| BSP 3/4" | 120 DU 26  |  | 30 | 36 | 14  |  |
| BSP 1"   | 120 DU 33  |  | 36 | 40 | 17  |  |



Male Threaded Nipple  
Nippel mit Aussengewinde

|          |           |  |    |    |    |  |
|----------|-----------|--|----|----|----|--|
| BSP 1/4" | 120 EU 13 |  | 33 | 19 | 9  |  |
| BSP 3/8" | 120 EU 17 |  | 33 | 19 | 9  |  |
| BSP 1/2" | 120 EU 21 |  | 36 | 22 | 12 |  |
| BSP 3/4" | 120 EU 26 |  | 41 | 27 | 14 |  |
| BSP 1"   | 120 EU 33 |  | 44 | 34 | 15 |  |



Standard Hose Plug  
Nippel mit Schlauchtülle

|       |           |  |      |    |  |  |
|-------|-----------|--|------|----|--|--|
| 9 mm  | 120 HU 09 |  | 23.3 | 47 |  |  |
| 13mm  | 120 HU 13 |  | 23.3 | 47 |  |  |
| 16 mm | 120 HU 16 |  | 23.3 | 47 |  |  |
| 19 mm | 120 HU 19 |  | 27.3 | 50 |  |  |

