



SERIE 014

PNEUMATIC COUPLINGS
PNEUMATISCHE KUPPLUNGEN



Interchangeability - Kompatibilität
TST 022, RECTUS 14, RECTUS 22, ARO 210,
PARKER 50, CEJN 300, ORION 44510, JWL
522, JWL 532

Temperature Range Temperaturbereich
-20 °C +100 °C (-4 °F +212 °F)

Working Pressure - Betriebsdruck
0 - 35 bar (0 - 508 PSI)

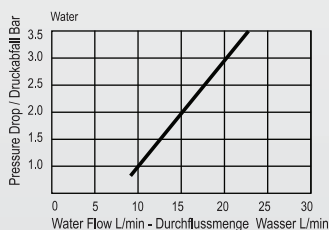
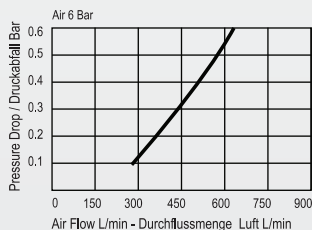
Flow capacity - Nennweite
NW - 5

Option - Optionen
Chrome plated - K-verchromt
Nickel plated - N-vernickelt
Viton Seal - V-Viton Dichtung
NPTF thread - T-NPTF-Gewinde
Brass Available

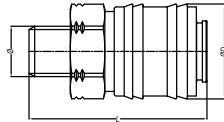
For optional orders please add the symbol
of your option end of the order no.
Bei Optionsbestellungen Kennbuchstabe
bitte hinzufügen (Beispiel: 014 EG 13-K-V)

Material - Material

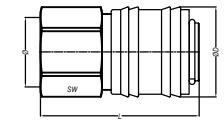
- Coupler Body- Kupplungsgrundkörper: Brass - Messing
- Sleeve - Hülse : Brass - Messing
- Valve - Ventil : Brass - Messing - Federn
- Spring - Federn : Stainless Steel - Edelstahl
- Locking O-Ring- Sprengring : Stainless Steel - Edelstahl
- Pins - Stifte : Stainless Steel - Edelstahl
- Seals - Dichtungen : Nitrile (Ni) - NBR (Ni)
- Plug - Nippel : Brass - Messing



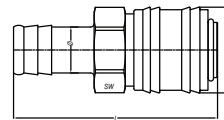
**Couplers and Plugs
Kupplungen und Nippel**



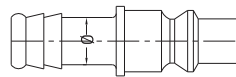
Male Thread Coupling
Kupplung mit Aussengewinde



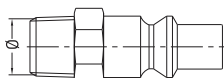
Female Thread Coupling
Kupplung mit Innengewinde



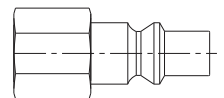
Standard Hose Barb Coupling
Kupplung mit Schlauchtülle



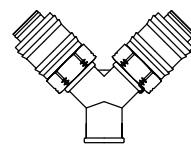
Standard Hose Barb Plug
Nippel mit Schlauchtülle



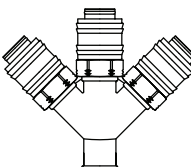
Male Thread Plug
Nippel mit Aussengewinde



Female Thread Plug
Nippel mit Innengewinde



2 way couplings
2 Wege Kupplungen



3 way couplings
3 Wege Kupplungen

Connection Anschlüsse	Order No Bestellnr.	SW	L	ØD
BSPT 1/4"	014 RG 13	22	44.5	27.4
BSPT 3/8"	014 RG 17	22	44.5	27.4
BSPT 1/2"	014 RG 21	22	47.5	27.4

BSP 1/4"	014 DG 13	22	44.5	27.4
BSP 3/8"	014 DG 17	22	44.5	27.4
BSP 1/2"	014 DG 21	23	47.5	27.4

6 mm - 1/4"	014 HG 06	22	59	27.4
8 mm - 5/16"	014 HG 08	22	59	27.4
9 mm - 5/14"	014 HG 09	22	59	27.4
10 mm - 3/8"	014 HG 10	22	59	27.4
13 mm - 1/2"	014 HG 13	22	59	27.4

6 mm - 1/4"	014 HU 06		48	12
8 mm - 5/16"	014 HU 08		48	12
9 mm - 5/14"	014 HU 09		48	12
10 mm - 3/8"	014 HU 10		48	12
13 mm - 1/2"	014 HU 13		48	12

BSPT 1/8"	014 RU 10	12	40	
BSPT 1/4"	014 RU 13	14	43	
BSPT 3/8"	014 RU 17	17	43	
BSPT 1/2"	014 RU 21	22	48	
BSP 1/8"	014 EU 10	12	38	
BSP 1/4"	014 EU 13	14	40	
BSP 3/8"	014 EU 17	17	40	
BSP 1/2"	014 EU 21	22	43	

BSP 1/8"	014 DU 10	14	34	
BSP 1/4"	014 DU 13	17	37	
BSP 3/8"	014 DU 17	19	37	
BSP 1/2"	014 DU 21	24	41	

BSP 1/4"	014 2G 13			
BSP 3/8"	014 2G 17			

BSP 3/8"	014 3G 17			
----------	-----------	--	--	--