

PNEUMATIC COUPLINGS
PNEUMATISCHE KUPPLUNGEN

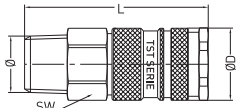
SERIE 019

SUPER FLOW LINE **SUPERDURCHFLUSS**



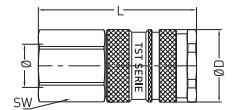
Couplers and Plugs
Kupplungen und Nippel

Connection Anschlüsse	Order No Bestellnr.	SW	L	ØD
--------------------------	------------------------	----	---	----



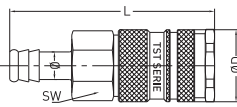
Male Thread Coupling
Kupplung mit Aussengewinde

BSPT 1/4"	019 RG 13	19	62,3	23
BSPT 3/8"	019 RG 17	19	63,3	23
BSPT 1/2"	019 RG 21	22	57,3	23



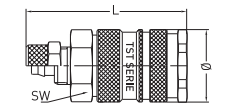
Female Thread Coupling
Kupplung mit Innengewinde

BSP 1/4"	019 DG 13	19	57,3	23
BSP 3/8"	019 DG 17	19	57,3	23
BSP 1/2"	019 DG 21	24	59,3	23



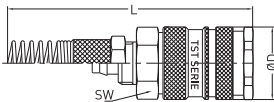
Standard Hose Barb Coupling
Kupplung mit Schlauchtülle

6 mm - 1/4"	019 HG 06	19	73,3	23
8 mm - 5/16"	019 HG 08	19	73,3	23
9 mm - 5/14"	019 HG 09	19	73,3	23
10 mm - 3/8"	019 HG 10	19	73,3	23
13 mm - 1/2"	019 HG 13	19	73,3	23



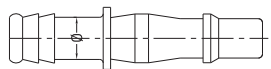
Plastic Hose Coupling
Kupplung für Kunststoffschlauch

6 x 8 mm - M 12x1	019 PG 06	19	64,3	23
8 x 10 mm - M 16x1	019 PG 08	19	67,3	23
9 x 12 mm - M 16x1	019 PG 09	19	67,3	23



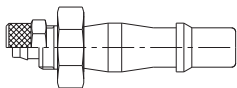
Plastic Hose Coupling With Spring
Kupplung für Kunststoffschlauch
mit Knickschutzfeder

6 x 8 mm - M 12x1	019 YG 06	19	144,8	23
8 x 10 mm - M 16x1	019 YG 08	19	161,8	23
9 x 12 mm - M 16x1	019 YG 09	19	161,8	23



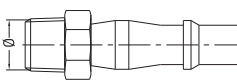
Standard Hose Barb Plug
Nippel mit Schlauchtülle

6 mm - 1/4"	019 HU 06		58	11
8 mm - 5/16"	019 HU 08		58	11
10 mm - 3/8"	019 HU 10		58	12
13 mm - 1/2"	019 HU 13		58	15



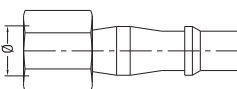
Plastic Hose Plug
Nippel für Kunststoffschlauch

6 x 8 mm - M 12x1	019 PU 06			
8 x 10 mm - M 16x1	019 PU 08		17	53
9 x 12 mm - M 16x1	019 PU 09		17	53



Male Thread Plug
Nippel mit Aussengewinde

BSPT 1/4"	019 RU 13	14	48,5	
BSPT 3/8"	019 RU 17	17	48,5	
BSPT 1/2"	019 RU 21	22	53,5	



Female Thread Plug
Nippel mit Innengewinde

BSP 1/8"	019 DU 10	14	45	
BSP 1/4"	019 DU 13	17	47	
BSP 3/8"	019 DU 17	19	47	
BSP 1/2"	019 DU 21	24	48	

Interchangeability - Kompatibilität
PCL 60 STANDARD SERIES, RECTUS 19

Temperature Range - Temperaturbereich
-20°C +100°C (-4°F +212°F)

Working Pressure - Betriebsdruck
0 - 35 bar (0 - 508 PSI)

Flow capacity - Nennweite
NW - 5.5

Option - Optionen

F - Thru-flow - Passage libre
C - Steel (coupler body)
Kupplungsgrundkörper aus Stahl
K - Chrome plated - Verchromt
V - Viton Seal - Viton Dichtung

For optional orders please add the symbol of your option end of the order no.

Bei Optionsbestellungen Kennbuchstabe bitte hinzufügen (Beispiel: 019 EG 13-K-V)

Material - Material

Coupler Body -
Kupplungsgrundkörper: Brass Nickel Plated -
Messing vernickelt

Back Part -
Hinterteil : Steel Nickel Plated -
Stahl vernickelt

Sleeve - Hülse : Steel Nickel Plated -
Stahl vernickelt

Valve - Ventil : Zinc Diecasting &
Nickel Plated -
Zinkdruckguß,
verzinkt

Springs - Federn : Stainless Steel -
Edelstahl

Locking O-Ring-
Sprengring : Stainless Steel -
Edelstahl

Balls - Kugeln : Stainless Steel -
Edelstahl AISI 420

Seals - Dichtungen : Nitrile - NBR (Ni)

Plug - Nippel : Steel Nickel Plated -
Stahl vernickelt

